



PROTEA HOTEL®

MARRIOTT

O R Tambo Airport



THE BEST LOCATION AND ULTIMATE CONVENIENCE.



## CONTENTS

---

LOCATION	5
INTRODUCTION	7
CONFERENCING	8
MENU OPTIONS	11
BANQUETING SNACK MENU OPTIONS	13
VENUE SET-UP	16
CONFERENCE ROOM SPECIFICATIONS	17
FLOOR PLANS	18
ACCOMMODATION	21
FACILITIES	23



## LOCATION

---

GPS : -26.125907, 28.233489

Oliver Tambo International Airport	3 km	5 min
Rhodesfield Gautrain Station	800 m	2 min

### DIRECTIONS:

#### FROM RHODESFIELD GAUTRAIN STATION:

Head north on Anson Street towards Ventura Street; Take the second right onto Wellington Street. Turn right into Gladiator driving around the circle. Carry on straight along Gladiator Street. The hotel is situated on the right, corner of Whirlwind Street and Gladiator Street. The Protea Hotel by Marriott® O R Tambo Airport's entrance is on the right hand side before you get to York Street.

#### FROM O.R. TAMBO INTERNATIONAL AIRPORT:

Take the R21 highway towards Pretoria; take the Voortrekker Road / Freight off Ramp. Keep to your left and take the Rhodesfield split into Albatross Street (M32). Turn left into Gladiator Street, keep on Gladiator Street, at the circle keep left. The hotel is situated on the right, corner of Whirlwind Street and Gladiator Street.

#### FROM SANDTON:

From Sandton, take Rivonia Road drive towards Grayston Road. Turn right at the traffic light on Grayston Road. You then proceed on the M1 towards Pretoria. Proceed on the M1 and then at the Buccleuch inter-change, you take the N3. Proceed and take the Modderfontein Road then turn right onto Parkland Road, drive straight over the bridge. At the traffic lights you turn right onto Zuurfontein Road.

The second traffic lights you will turn left onto Plane Road. Proceed and turn right at the traffic lights onto Old Pretoria Road. At the 3rd traffic lights (VW on your right hand side and Nissan / Mazda on your left hand side) turn onto Wellington Street, go straight until you get to a circle go right, around the circle, into Gladiator. Protea Hotel® O R Tambo Airport is situated on the right.

#### FROM JOHANNESBURG CENTRAL:

Take the N3 Eastern Bypass (towards Durban), take the exit towards the N12, Continue onto the N12, and take the R24, Bedfordview exit onto the R24. Continue onto the R21, towards Pretoria. Take the M96 Voortrekker Road / Freight Off Ramp. At the robot; turn left and take the Rhodesfield split, you will now be on Albatross Road. Keep straight, on the left hand side at the second robot turn left into Gladiator Street. Keep on straight until you find the circle, keep to the left of the circle. Protea Hotel® O R Tambo Airport is situated on the right.

#### FROM PRETORIA:

Take the R21 towards Kempton Park / O.R. Tambo International Airport; take the M96 Voortrekker Rd / Freight off-ramp. Turn right at the robot, keep to your left and take the Rhodesfield split, you will now be on Albatross Road. Keep straight, on the left hand side at the second robot turn right into Gladiator Street. Keep on straight until you find the circle, keep to the left of the circle. Protea Hotel® O R Tambo Airport is on the corner of Whirlwind Street and Gladiator Street.



## INTRODUCTION

---

The pristine 4-Star Protea Hotel® O R Tambo Airport is set in the heart of Kempton Park, minutes from O.R. Tambo International Airport, South Africa's largest airport. Themed around an aircraft hangar, the industrial ambiance of the Hotel is felt in the polished concrete floors, steel finishes, chrome lighting and top to bottom windows that overlook the aeroplanes as they dock and take off. Conveniently located merely 3 km for the O.R Tambo International airport and 800 m from the Rhodesfield Gautrain Station. Ultimate convenience is offered with the complimentary airport shuttle allowing your organisers and GUESTS peace of mind in ensuring transportation to and from the hotel. The Guatrain shuttle is booked on request and links GUESTS to major areas such as Pretoria, Midrand, Johannesburg and Sandton within minutes.

Stylish themed bedrooms offering comfort is equipped with a direct dial telephone, large executive work desk and a laptop safe. There's also the vibrant á la carte restaurant, relaxing bar with free Wi-Fi, swimming pool and health club. If you're conducting business, ask about our state-of-the-art conference facilities.

# CONFERENCING

With an exclusive Conference Centre we want to change any conference from an ordinary meeting to a personalised experience you and your delegates will never forget. With the luxury of choosing between 10 different venues accommodating delegates of 2 to 300, we have the capability of hosting any type of event. The aviation theme is carried through to our Conference facilities offering the ultimate facilities and view! Facilities boast state-of-the-art AV equipment, including mounted Data Projectors, electronically controlled drop down and mounted screens and built in PA Systems providing auditory functionality. Team building activities can take place with our exclusive Team Building supplier. Stationery and refreshments included in the venues to offering a complete conference experience.

With venues that offer versatility you can have a combination of events taking place from your own private dinner, spit braai, themed breaks or any other event you envision in our extended social outdoor areas

## DAY CONFERENCE PACKAGES

### FULL DAY CONFERENCE

- Venue Hire
- Data Projector and Screen
- Buffet Lunch in our Warehouse Restaurant
- Tea / Coffee station
- Arrival Snacks
- 2 x Tea / Coffee Breaks with Snacks
- PA System
- Stationery Kits
- Bottled Water & cordial
- Sweets
- Flip Chart and Marker Pens
- Complimentary Parking
- Complimentary Wi-Fi

### HALF DAY CONFERENCE WITH LUNCH

- Venue Hire
- Data Projector and Screen
- Buffet Lunch in our Warehouse Restaurant
- Tea / Coffee station
- Arrival Snacks
- 1 x Tea / Coffee Breaks with Snacks
- PA System
- Stationery Kits
- Bottled Water & cordial
- Sweets
- Flip Chart and Marker Pens
- Complimentary Parking
- Complimentary Wi-Fi

OUR VENUES CAN BE HIRED FOR PRIVATE FUNCTIONS, PLEASE CONTACT THE BANQUETING TO TEAM TO ASSIST WITH ANY ENQUIRIES. CONFERENCE CALL FACILITIES AVAILABLE UPON REQUEST.





## MENU OPTIONS

### THEMED LUNCH MENUS

Introducing a different approach to the standard buffet lunch. (Upon request, not included in a standard conference package.)

### PICNIC IN THE GARDEN

Opt for something more relaxed and spread out on blankets in our garden. Tuck into delicious cocktail snacks served picnic style. (Weather dependent and on CLIENT request)

Includes:

- Beef and chicken mini sliders
- Salad jars
- Mini fish and chips
- Japanese boxes
- Mini prawn tomato carpaccio
- Chocolate brownies
- Rainbow jelly
- Mousse in glass
- Beer
- Waiter to serve drinks

### LUNCH UNDER THE TREES (AL FRESCO)

Experience an Aviation Themed Lunch under the trees with a back drop of airplanes in the background. (Weather dependent and on CLIENT request)

Includes:

- Two meats
- Three vegetables
- One vegetarian
- Two starches

### FRIDAY IS BRAAI DAY

Be treated to an authentic South African braai in our garden with a view of the airport and aircrafts. (Weather dependent and on CLIENT request)

Includes:

- A choice three chefs choice starters
- Pap
- Fresh breads
- Siba sauce
- A selection of salads - potato salad, green salad, beetroot, three beans salad
- Chakalaka
- Corn on the cob
- Jacket potato
- A choice of three meats – wors, lamb and chicken
- A choice of two cakes
- A choice three chef choice tartlets
- Hot pudding with custard
- Fruit salad

(refer to our comprehensive Braai menu included in this document)

## MENU OPTIONS

---

### BRAAI MENU

#### SALADS

Salad Valley with a selection of dips and sauces

Corn breads with mini butters

Spicy three bean salad

Potato and parsley pods vinaigrette salad

Beetroot and raisin salad

Mini vetboek with romanito tomatoes

Selection of cold meat platters with pickled vegetables

#### OFF THE BRAAI

Grilled lamb braai chops

Boerewors with caramelised onion

Mini espatada bell peppers rose marinated grilled chicken kebabs

Seasonal roast vegetables seasonal stir-fried vegetables

Pots

Chilli beans

Corn on the cob

Pap with wilted spinach

Sheba sauce

Baked potatoes in foil

Seasonal roast vegetables seasonal stir-fried vegetables

### DESSERT

Tropical fruit salad

Traditional mini malva puddings

Vanilla seed custard

Selection of cakes and tarts

## BANQUETING SNACK MENU OPTIONS

---

### ARRIVALS

- Jam jar berry selection
- Mini fruits salads in jars
- Sexy muesli shots with assorted yoghurt
- Filled croissant with bacon and scrambled eggs, assorted cold meat with cheese and tomato, chicken mayonnaise
- Mini pancakes stack
- Mini waffles topped with cream, cinnamon sugar, honey, syrup and grated cheese
- Assorted Danish pastries dusted with icing sugar and chocolate
- Assorted freshly baked muffins with jam and butter
- Savory muffins
- Egg muffins
- Burritos parcels (wraps) filled with scrambled eggs with bacon or stir-fry vegetables/eggs and sausages/rocket cheese tomato assorted cold meats
- Assorted cold meats egg cups
- Spinach and mince pin wheels
- Potato rosti bruschetta topped with smoked chicken sun-dried tomato cheese cucumber disk and caramelised onion
- Sausages and cheese biscuit bites
- Healthy berry and fruits smoothies
- Oatmeal muesli bars
- savory cheese puff muffin's
- Bacon pancakes stick dippers
- Bacon and eggs crescent squares with chives, peppadew® and salt and pepper
- Omelette breakfast bites cups
- All bran and berries yoghurt shots
- Bacon chives, olives bacon eggs muffin cups
- Assorted breakfast canapés
- Masala feta and spinach puffs
- Granola bars with yoghurt
- Cinnamon and pear twirls
- Healthy seeds bars

# BANQUETING SNACK MENU OPTIONS

## MIDMORNING SNACKS

- Assorted mini spicy bunny chow beef/chicken/vegetarian

### CHICKEN OR BEEF SLIDERS WITH NONE ALCOHOLIC BEER:

- Mini cheese grillers hotdogs
- Mini corndogs in jars with sweet chilli dip sauce
- Chilli chicken, beef, vegetarian corn taco's shell
- Stuffed beef pastrami roll in chop stick
- Lemongrass chicken meatballs on a skewer
- Barbeque beef koftas kebabs
- Cucumbers crudité's wraps
- Tomato gazpacho prawn cocktail
- Salad in jars: greek, italian and niçoise
- Cubed watermelon and feta blocks
- Stuffed portabella mushrooms with tomato salsa and parmesan cheese
- Caramelised balsamic onion with cherry tomatoes, brie cheese rocket tartlets
- Blinis topped with quail eggs and crème fraiche
- Tempura grilled vegetable skewers
- Mini beef tacos
- Barbeque sticky chicken wings/crumbed chicken wings
- Fried cheese balls with dipping sauce
- Mini cheese, beef quesadilla
- Assorted mini sausages rolls

- Steak and kidney, pepper steak, mushroom chicken, cornish mini pies
- Healthy classic mini sandwiches.
- Mimi filled pita pockets
- KFC® wraps with lettuce crumbed chicken strips, tomato, cheese and avocado
- Pear and blue cheese yam appetisers
- Savory ham puff éclairs
- Spanakopita's
- Crumbed chicken strips
- Mash and mince spring roll crackers





## VENUE SET UP

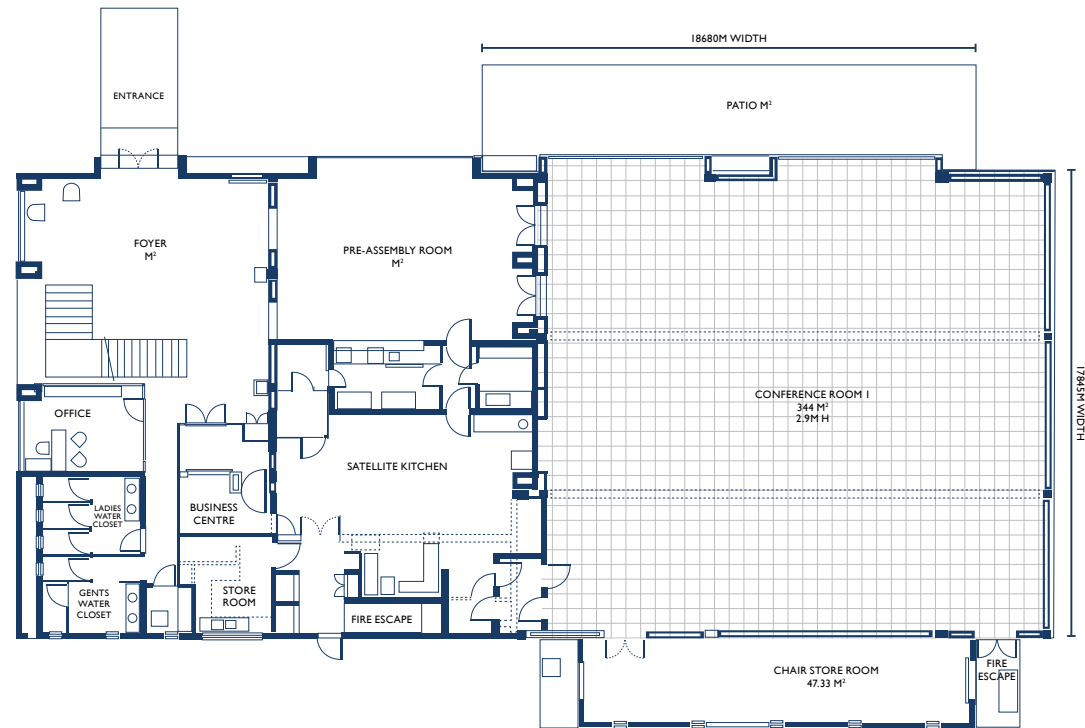


## CONFERENCE ROOM SPECIFICATIONS

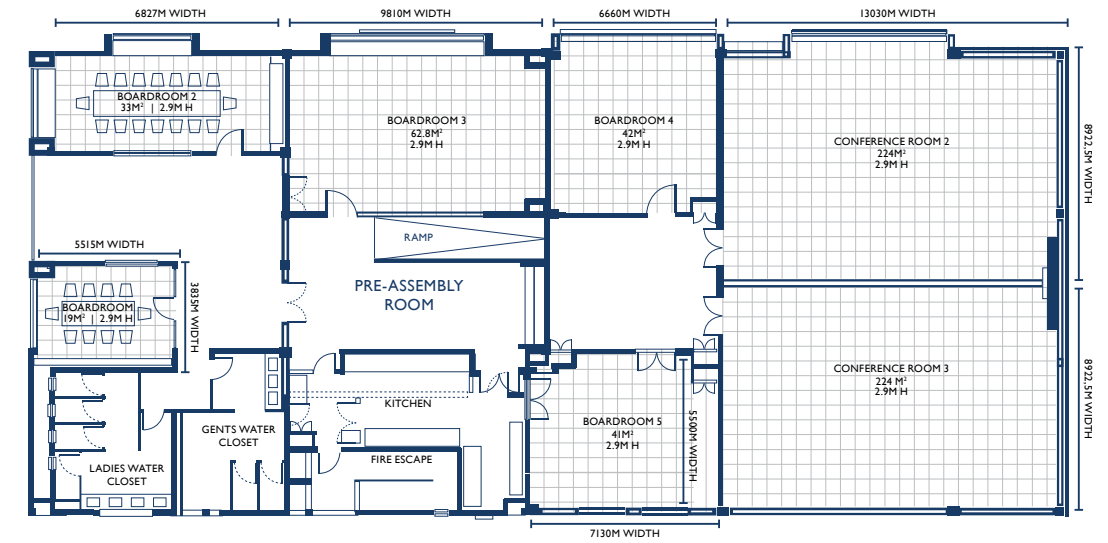
ROOM	AREA IN SQM	HEIGHT (M)	ROOM WIDTH (M)	ROOM LENGTH (M)	THEATRE / CINEMA (PAX)	SCHOOL ROOM (PAX)	BANQUET ROUND (PAX)	U-SHAPE (PAX)	BOARD ROOM (PAX)
Conference Room 1	-	-	-	-	300	270	180	90	-
Conference Room 2	-	-	-	-	120	100	50	45	-
Conference Room 3	-	-	-	-	120	100	50	45	-
Conference Room 2&3 Combined	-	-	-	-	240	180	120	70	-
Boardroom 1	-	-	-	-	-	-	-	-	10
Boardroom 2	-	-	-	-	-	-	-	-	16
Boardroom 3	-	-	-	-	40	35	32	24	-
Boardroom 4	-	-	-	-	25	20	16	18	-
Boardroom 5	-	-	-	-	25	20	16	18	-
Boardroom 6	-	-	-	-	40	35	32	24	-
Boardroom 7	-	-	-	-	40	35	32	24	-

# FLOOR PLANS

## FIRST FLOOR



## GROUND FLOOR





## ACCOMMODATION

213 Remarkable bedrooms ranging from Business class to First Class providing European and UK adapters, direct dial telephone, wireless internet access, tea and coffee making facilities, individually controlled air conditioning, an electronic safe that can take laptops and soundproof windows with blackout curtains.

The luxurious Suite should not go unnoticed as well as the universal accessible rooms equipped for the convenient movement.

### BUSINESS CLASS

Rooms are designed to ensure business travellers can work efficiently. Luxuriously equipped with either a king size bed or two three-quarter beds, making it a perfect room for sharing. Smoking and interleading rooms are available.

### FIRST CLASS DELUXE

Elegant room with a King bed and en-suite bathroom. Consisting of a bath and a shower.

### SUITE (1)

Top-to-bottom glass provides a view over O.R. Tambo International Airport with a King Bed, en-suite bathroom and living space.

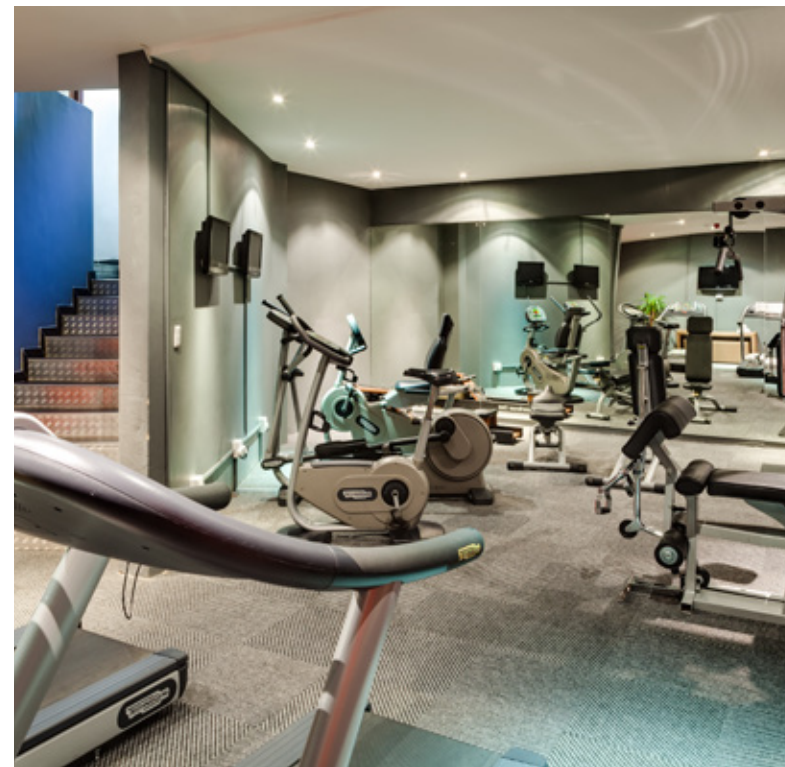
### UNIVERSAL ACCESS (4)

Universally designed rooms with all the amenities designed to ensure your comfort.

### IN ROOM FACILITIES:

- 500MB per day / per room
- Executive Working Desk
- European & UK Adaptors
- Individually Controlled Air-conditioning
- Laptop-friendly safe
- LCD Flat Screen TV with 18 DSTV channels
- Hairdryer
- Tea & Coffee Making Facilities
- Soundproof windows
- Laundry Service
- 24 Hour Room Service
- Complimentary water





## FACILITIES

---

### DINING

#### THE WAREHOUSE (ON SITE):

Enjoy fine fusion cuisine and delicacies at Protea Hotel® O R Tambo Airport's vibrant a la carte restaurant – The Warehouse Restaurant.

Sumptuous English breakfasts, gourmet lunches and appetising dinners are prepared by the skilled chef and his team. Also offers Buffet Lunches and Dinners.

Eat inside or on the terrace overlooking the pool.

Room service is available 24 hours a day for those who are too jet lagged to step out of their room.

RESTAURANT & BAR – Serving Breakfast (06h30 – 10h30), Lunch (12h30 – 14h30), Dinner (18h30 – 22h30)

### SPORT AND LEISURE

#### 24 HOURS GYM

IPADS are situated in the Restaurant and at Reception for GUEST entertainment and are connected to unlimited Wi-Fi. GUESTS can check their flight details before departure with a Flight Application as well as many other social media and other applications.

FLIGHT SIMULATOR – Complete your airplane experience by leaving the hotel knowing how to fly your own plane.

### OTHER FACILITIES

Free Gautrain / Airport Shuttle Service | 24 Hour Security | 24 Hour Reception | Complimentary Parking

500MB complimentary Wi-Fi, per day | Swimming Pool | Business Centre



PROTEA HOTELS®

---

MARRIOTT

Corner York & Gladiator Street, Rhodesfield, Kempton Park, Johannesburg, South Africa

P.O. Box 1325, O.R. Tambo International 1627, South Africa

Tel: +27 (0) 11 977 2600 Fax: +27 (0) 11 977 2601

Email: [resmng@phortambo.com](mailto:resmng@phortambo.com)

Protea Hotels by Marriott®, Central Reservations South Africa

Tel: 0861 11 9000 or +27 (0) 21 430 5300 | Fax: +27 (0) 21 430 5330

Email: [reservations@proteahotels.com](mailto:reservations@proteahotels.com)

Follow Protea Hotel®'s on

