



PROTEA HOTEL®

MARRIOTT

Johannesburg
Balalaika Sandton

A LITTLE BIT OF COUNTRY IN THE HEART OF SANDTON



CONTENTS

LOCATION	5
INTRODUCTION	7
LOCATION	6
CONFERENCING	8
DAY CONFERENCE PACKAGES	8
VENUE SET-UP	10
CONFERENCE ROOM SPECIFICATIONS	11
FLOOR PLANS	12
ACCOMMODATION	15
FACILITIES	17



LOCATION

The Protea Hotel by Marriott® Johannesburg Balalaika Sandton is a home away from home ideally located in Johannesburg's economic heartland, on Maude Street. The Johannesburg Stock Exchange, Sandton Convention Centre and the city's most exclusive shopping mall are a short stroll away. The hotel offers free shuttle services to the Sandton Gautrain Station and immediate Sandton district throughout the day.

GPS: -26.10367, 28.058198

DIRECTIONS FROM OR TAMBO INTERNATIONAL AIRPORT:

1. Take the R24 to JOHANNESBURG. Drive for approximately 10 km.
2. Take the N3 turnoff to PRETORIA. Pass the LINKSFIELD and MODDERFONTEIN off ramps, drive for approximately 20.8 km.
3. Take the MARLBORO DRIVE off ramp to your left. Turn left at the traffic lights.
4. Carry on with MARLBORO DRIVE for approximately 2.4 km.
5. Turn right at the second set of traffic lights, onto SOUTH ROAD. Follow SOUTH ROAD for approximately 3.6 km.
6. Turn left onto RIVONIA ROAD. Follow the road for approximately 1.3 km, and then turn right at the 4th set of traffic lights, into MAUDE STREET.
7. Drive for approximately 200 m, the Protea Hotel® Johannesburg Balalaika Sandton will be on your left-hand side. A valet parking service is available from the main entrance of the hotel.
8. PLEASE NOTE: Complimentary hotel parking is accessible via STELLA STREET.

ENTRANCE TO THE PARKING IS ON STELLA STREET, OPPOSITE SANDOWN MEWS.

GPS co-ordinates: 26° 6' 21" S | 28° 3' 34" E

1. From the hotel main entrance, turn left onto MAUDE STREET towards WEST STREET; take the first left at the traffic lights onto WEST STREET.
2. Drive for approximately 270 m, and then take the first left onto STELLA STREET.
3. Follow STELLA STREET for approximately 220 m. Protea Hotel® Johannesburg Balalaika Sandton signage will be on the left-hand side to enter the parking.

LOCATION

DISTANCE FROM HOTEL

Gautrain Station	250 m
Nelson Mandela Square	400 m
Sandton Convention Centre	400 m
Sandton City	500 m
Mushroom Farm Park	550 m
Melrose Arch	7.2 km
Johannesburg CBD	17 km
Lanseria Airport	30 km
O.R. Tambo International Airport	36 km

INTRODUCTION

The Protea Hotel® Johannesburg Balalaika Sandton on Maude Street, in Sandton, is located in Johannesburg's economic heartland. The hotel's charming colonial theme is accentuated with wooden elements and delicate floral accents. Each of the 330 classically-styled rooms make GUESTS feel as though they never left home – with a king-size bed, LCD television, electronic safe and a full en-suite bathroom with a walk-in shower. Business executives are catered for with an executive desk, office chair and international plug points, as well as fast and free uncapped Wi-Fi.

The English countryside atmosphere defines this four-star hotel as a little bit of country in the heart of Sandton. Birdsong makes GUESTS forget that they are in a bustling metropolis. A complimentary shuttle to and from the Gautrain station makes the Balalaika easily accessible. Whether it is for business or leisure, the central location and warm hospitality of the Protea Hotel® Johannesburg Balalaika Sandton are unrivalled, making it your first and only choice when staying in Johannesburg.

CONFERENCE

The Protea Hotel® Johannesburg Balalaika Sandton is in the heart of Sandton and within easy, central reach of all business and entertainment centres, it is a popular conference and function venue – from intimate gatherings to gala events for 150 to 300 people.

Our efficient, knowledgeable and discreet conferencing team is always on hand to ensure your event runs smoothly and professionally and to cater to any particular requirements.

DAY CONFERENCE PACKAGES

EXECUTIVE

(08H00-17H00)

INCLUDES THE FOLLOWING:

Tea / coffee / refreshments – on arrival

Tea / coffee / refreshments – mid-morning

Lunch

Tea / coffee and deluxe refreshments – afternoon

Venue hire

Parking

Standard equipment – data projector, standard screen, flipchart, whiteboard, podium

14% VAT

PREMIUM

(08H00-17H00)

INCLUDES THE FOLLOWING:

Tea / coffee / refreshments – on arrival

Tea / coffee / refreshments – mid-morning

Lunch

Tea / coffee and refreshments – afternoon

Venue hire

Parking

Standard equipment – data projector, standard screen, flipchart, whiteboard, podium

14% VAT

ON CONFERENCE TABLES:

(Applicable to Executive conference package only)

Biltong in the afternoon

All packages include fast, free uncapped Wi-Fi.

DAY CONFERENCE PACKAGES

HALF DAY CONFERENCE PACKAGE (INCLUDING LUNCH)

(07H00-12H00 OR 12H00-17H00)

INCLUDES THE FOLLOWING:

Tea / coffee / refreshments – on arrival

Tea / coffee / refreshments – mid-morning or afternoon

Lunch

Venue hire

Parking

Standard equipment – data projector, standard screen, flipchart, whiteboard, podium

14%VAT

HALF DAY CONFERENCE PACKAGE (EXCLUDING LUNCH):

(07H00-12H00 OR 12H00-17H00)

INCLUDES THE FOLLOWING:

Tea / coffee / refreshments – on arrival

Tea / coffee / refreshments – mid-morning or afternoon

Venue hire

Parking

Standard equipment – data projector, standard screen, flipchart, whiteboard, podium

14%VAT

All packages include fast, free uncapped Wi-Fi.

VENUE SET UP

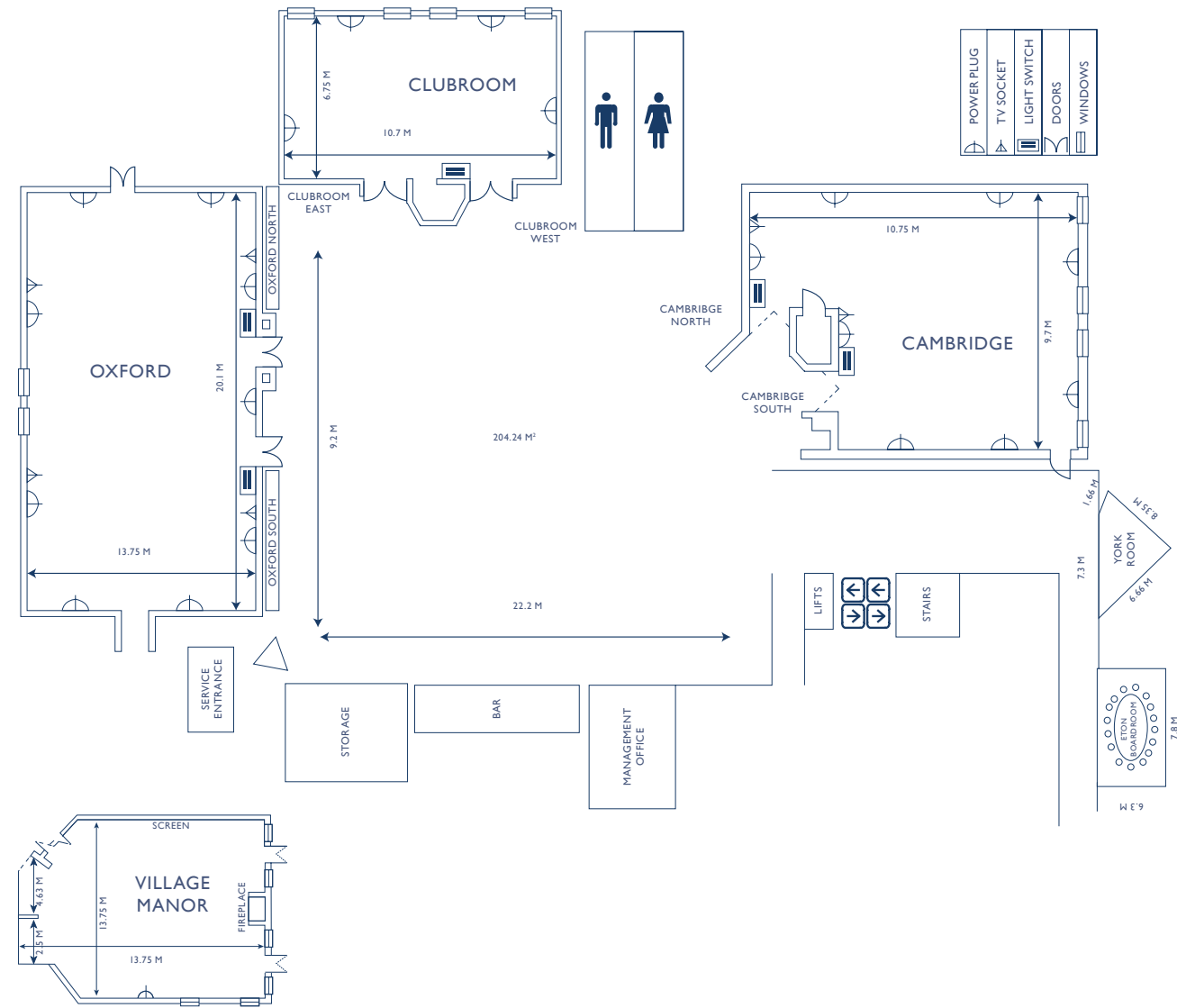


CONFERENCE ROOM SPECIFICATIONS

ROOM	AREA IN SQM	HEIGHT (M)	ROOM WIDTH (M)	ROOM LENGTH (M)	THEATRE / CINEMA (PAX)	SCHOOL ROOM (PAX)	BANQUET ROUND (PAX)	COCKTAIL (PAX)	U-SHAPE (PAX)
Cambridge	104.28	3,75	9.7	10.8	100	70	80	50	40
Cambridge North	-	3,75	-	-	50	35	30	30	15
Cambridge South	-	3,75	-	-	40	30	30	30	15
Club Room	72.23	2,75	6.8	10.7	50	30	40	30	30
Club East	-	2,75	-	-	20	15	20	20	10
Club West	-	2,75	-	-	20	15	20	20	10
Oxford	276.38	2,55	13.75	20.1	300	200	200	350	80
Oxford North	-	2,55	-	-	140	100	80	80	45
Oxford South	-	2,55	-	-	140	100	80	80	45
The Village Manor	189	5,8	13.7	13.7	220	170	100	200	50
Eton	3	5,8							

Boardroom style seating only – 16 pax

FLOOR PLANS





ACCOMMODATION

All 330 rooms at the Protea Hotel® Johannesburg Balalaika are the epitome of relaxed, sophisticated English country elegance and a home away from home for the discerning GUEST. Each room is luxuriously carpeted and curtained, tastefully furnished in a classic yet comfortable style and beautifully appointed.

- 188 King Bedded Rooms
- 58 Twin Apart Rooms
- 51 Twin Together Rooms
- 19 Crown Court Suites (Deluxe)
- 8 Family 2 Bedroom Suites
- 4 Honeymoon Suites
- 2 Universally Accessible Rooms



- Tranquil comfort with air conditioning, LCD flat screen, executive work desk, free Wi-Fi and more
- Standard: 188 King and 109 modern Twin rooms
- Crown Court Honeymoon Suites: Four luxurious rooms
- Suites: 19 Crown Court suites and eight elegant two-bedroomed family suites
- Wing: 16 North and 15 South corner rooms overlooking the gardens (standard rooms)
- Accessible: Two comfortable, fully accessible rooms



FACILITIES

DINING

COLONY RESTAURANT (ON SITE):

A charming restaurant, renowned for its full English and continental buffet breakfast, with lunch available as part of a day conference package.

BULL RUN RESTAURANT (ON SITE):

A premier establishment famed for its prime cuts of exquisite beef, stored and served via its own in-house butchery, and an extensive selection of the finest Cape wines. Situated adjacent to the hotel, and opposite the Johannesburg Stock Exchange.

SPORT AND LEISURE

- Gym
- Pool

OTHER FACILITIES

The Oval Coffee Shop

Lords Cigar Bar

Crown Court Lounge

Free uncapped Wi-Fi is available throughout the hotel for GUESTS.

Complimentary Sandton and Gautrain shuttle.



PROTEA HOTELS®

MARRIOTT

Maude Street, Sandown, Sandton 2196, South Africa P.O. Box 783372, Sandton 2146, South Africa
Tel: +27 (0) 11 322 5000 Fax: +27 (0) 11 322 5023 Email: banqueting@balalaika.co.za

Protea Hotels by Marriott®, Central Reservations South Africa
Tel: 0861 11 9000 or +27 (0) 21 430 5300 | Fax: +27 (0) 21 430 5330 | Email: reservations@proteahotels.com
proteahotels.com

Follow Protea Hotels on

